



# **Aras 3D Visualization**

## **12.0R8**

### **Upgrading from Version 12.0R1**

*Document #: D-008078*

*Last Modified: 11/27/2024*

# Copyright Information

Copyright © 2024 Aras Corporation. All Rights Reserved.

Aras Corporation  
100 Brickstone Square  
Suite 100  
Andover, MA 01810  
**Phone:** 978-691-8900

## Notice of Rights

Copyright © 2024 by Aras Corporation and/or its affiliates. All rights reserved.

This document is protected by U.S. and international copyright laws and conventions. No copyright may be obscured or removed from this document. This document may not be modified or altered, or reproduced or transmitted in any form, without the explicit permission of the copyright holder.

Aras Innovator, Aras, and the Aras Corp "A" logo are registered trademarks of Aras Corporation in the United States and other countries.

All other trademarks referenced herein are the property of their respective owners.

## Notice of Liability

THIS DOCUMENT IS PROVIDED FOR INFORMATIONAL PURPOSES ONLY, AND THE CONTENTS HEREOF ARE SUBJECT TO CHANGE WITHOUT NOTICE. THE INFORMATION CONTAINED IN THIS DOCUMENT IS DISTRIBUTED ON AN "AS IS" BASIS, WITHOUT WARRANTY OF ANY KIND, EXPRESS OR IMPLIED, INCLUDING, BUT NOT LIMITED TO, THE IMPLIED WARRANTIES OF MERCHANTABILITY AND FITNESS FOR A PARTICULAR PURPOSE OR A WARRANTY OF NON-INFRINGEMENT. ARAS SHALL HAVE NO LIABILITY TO ANY PERSON OR ENTITY WITH RESPECT TO ANY LOSS OR DAMAGE CAUSED OR ALLEGED TO BE CAUSED DIRECTLY OR INDIRECTLY BY THE INFORMATION CONTAINED IN THIS DOCUMENT OR BY THE SOFTWARE OR HARDWARE PRODUCTS DESCRIBED HEREIN.

# Table of Contents

<b>Send Us Your Comments .....</b>	<b>4</b>
<b>1 Overview .....</b>	<b>5</b>
1.1 Prerequisites .....	5
1.2 Conversion Server and Agent Service Setup .....	5
<b>2 Upgrading Aras CAD Converter and Aras 3D Viewers .....</b>	<b>6</b>
2.1 Notification and Backup .....	6
2.2 Installing the Upgrade .....	7
2.2.1 Automated Upgrade Option .....	7
2.2.2 Manual Upgrade Option .....	11
2.3 Confirming the Upgrade .....	17
<b>3 (Optional) Upgrading Aras Dynamic Visualization .....</b>	<b>18</b>
3.1 Installing the Upgrade .....	18
3.1.1 Automated Upgrade Option .....	18
3.1.2 Manual Installation Option .....	20
3.2 Confirming the Upgrade .....	24

## Send Us Your Comments

---

Aras Corporation welcomes your comments and suggestions on the quality and usefulness of this document. Your input is an important part of the information used for future revisions.

- Did you find any errors?
- Is the information clearly presented?
- Do you need more information? If so, where and what level of detail?
- Are the examples correct? Do you need more examples?
- What features did you like most?

If you find any errors or have any other suggestions for improvement, indicate the document title, and the chapter, section, and page number (if available).

You can send comments to us in the following ways:

**Email:**

[support@aras.com](mailto:support@aras.com)

Subject: Aras Innovator Documentation

Or,

**Postal service:**

Aras Corporation  
100 Brickstone Square  
Suite 100  
Andover, MA 01810  
Attention: Aras Innovator Documentation

Or,

**FAX:**

978-794-9826  
Attn: Aras Innovator Documentation

If you would like a reply, provide your name, email address, address, and telephone number.

If you have usage issues with the software, visit <https://www.aras.com/support/>.

# 1 Overview

---

This document outlines the steps for upgrading from Aras 3D Visualization version 12.0R1, 12.0R2, 12.0R3, 12.0R4, 12.0R5, 12.0R6, or 12.0R7 to version 12.0R8. The changes affect the Conversion Server, Aras Innovator Code Tree, and the Aras Innovator database.

## 1.1 Prerequisites

To upgrade to version 12.0R8 of Aras 3D Visualization, confirm that all required components are installed:

- Aras Innovator 12.0 SP14, 12.0 SP15, 12.0 SP16, 12.0 SP17, or 12.0 SP18
- Aras Conversion Server and Aras Agent Service running with the Aras Innovator environment
- Aras 3D Visualization 12.0R1, 12.0R2, 12.0R3, 12.0R4, 12.0R5, 12.0R6, or 12.0R7
- (Optional) Aras Dynamic Model Constructor
- Aras Update Tool  
or
- Aras Package Import Tool

## 1.2 Conversion Server and Agent Service Setup

The Conversion Server and Agent Service need to be set up to work with Aras Innovator. For more information on this setup, refer to the *Aras Innovator – Conversion Server Setup Guide*.

## 2 Upgrading Aras CAD Converter and Aras 3D Viewers

This section describes upgrading to version 12.0R8 of Aras 3D Visualization (Aras CAD Converter and Aras 3D Viewers).

A test run on a non-production instance is always recommended before attempting this procedure on your production system.

### 2.1 Notification and Backup

1. Notify users that the system will be down at a scheduled time and that they should log out of the system before the process starts.

**Note:** It is best to give at least a 24-hour notice, as well as a reminder 15 minutes prior to taking the system off-line.

2. Back up the code tree:

The “Code Tree” refers to files and folders installed on the disk when Aras Innovator was first installed.

The default path for the Code Tree installation would be something like:

C:\Program Files(x86)\Aras\Innovator

With the following contents:

Name
AgentService
ConversionServer
DB
Innovator
OAuthServer
Tools
VaultServer
ConversionServerConfig.xml
InnovatorServerConfig.xml

The following steps can be used to confirm the installation folder:

- a. From the Windows search field, enter **Control** to access the **Control Panel**.
  - b. Select **Programs and Features**.
  - c. Right-click on the **Name** column and select **More...**
    - i. Select the **Comments** header if it has not been checked.
    - ii. Click **OK**.
  - d. Search for the **Aras Innovator** entry in the **Programs and Features** window.

After verifying the Code Tree installation path, back up the folder and all its contents.
3. Back up the Conversion Server.

The default path for the Conversion Server installation is the following:  
C:\Program Files(x86)\Aras\Innovator\ConversionServer
  4. Back up the HOOPS Converter directory.

The default path for the HOOPS Converter installation is the following:  
C:\HOOPS Converter

5. Disconnect all users from the database.

The easiest way is to change the database connection string from <DB-Connection... to <xDB-Connection in the InnovatorServerConfig.xml file and restart the **w3svc service (IIS)**. This expires all sessions and prevents all new connections to the Aras Innovator database through the existing instance.

6. Back up the database.

Store these files in a safe location, as they will need to be restored if the process fails.

7. Enable database connections.

After the database backup has been completed, enable the database connection string in the InnovatorServerConfig.xml by changing it from <xDB-Connection... to <DB-Connection... and restarting the **w3svc service (IIS)**.

## 2.2 Installing the Upgrade

Aras 3D Visualization can be upgraded using the Automated Installation Option (using the **Aras Update Tool**) or the Manual Installation Option (using the **Aras Import Tool**).

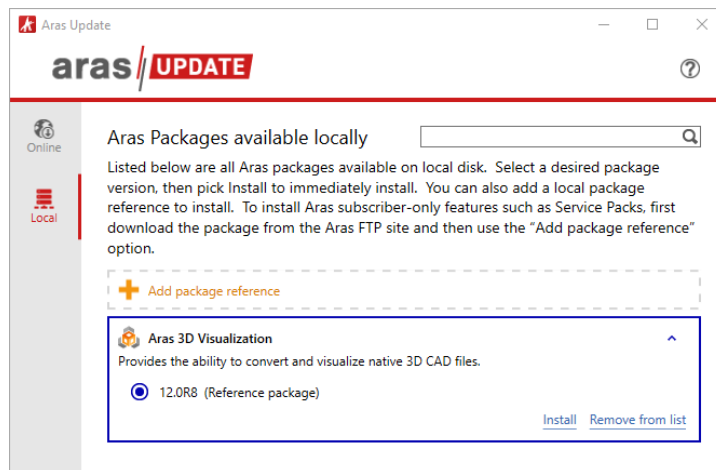
### 2.2.1 Automated Upgrade Option

1. Download the **Aras 3D Visualization 12.0R8 CD Image** package from the [Aras FTP](#) site to the Conversion Server machine.
2. Enable the **Super User (root)** User.
3. Launch the **ArasUpdate.exe** file as the administrator.

If default options were selected during installation, the **ArasUpdate.exe** file can be found in the C:\Program Files (x86)\Aras\Aras Update\ directory

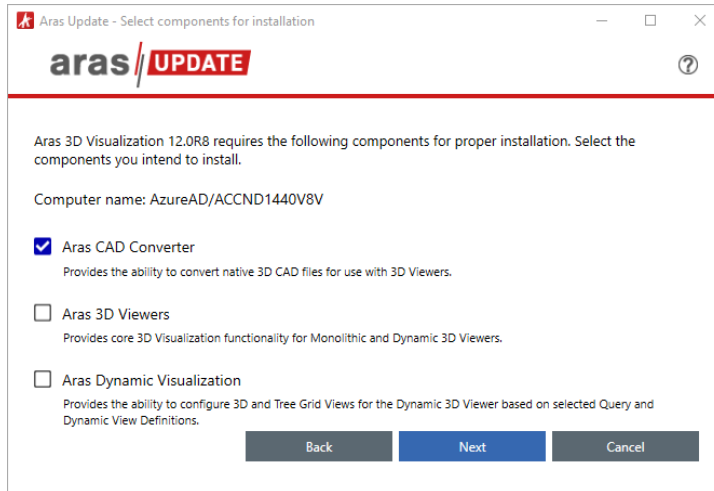
**Note:** For more information on Aras Update, see the *Aras Update – User Guide*.

4. On the **Local** tab, click **Add package reference** and navigate to the folder where the **Aras 3D Visualization 12.0R8 CD Image** package was extracted from the first step.
5. Expand the **Aras 3D Visualization** package and click **Install**.

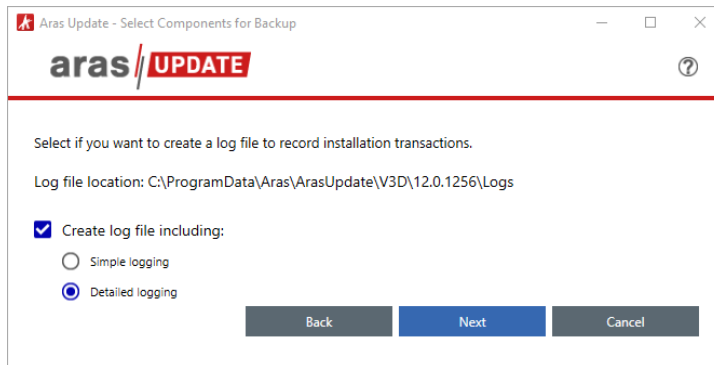


6. Select the **Aras CAD Converter** option and click the Next button.

**Note:** If the Aras Conversion Server and the Aras Innovator Server are located on the same machine, the **Aras 3D Viewers** and **Aras CAD Converter** can be installed simultaneously.



7. Select the appropriate logging option and click Next.



The logging option records the installation attempt and can be used to troubleshoot issues.

8. Input the connection information:

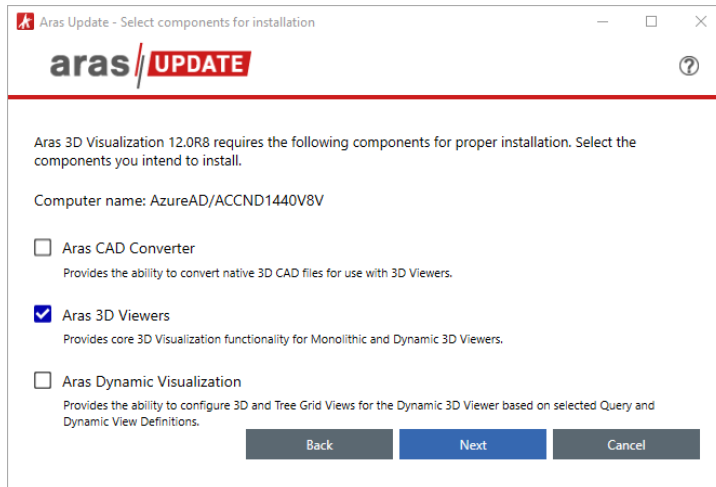
- **Path to folder where Conversion Server is installed:** The path of the Conversion Server folder (usually located in a root folder) with the `ConversionServer.xml` file.
- **Directory for HOOPS:** The path to the folder where CAD Converter files will be installed
- **Server URL:** The connection URL for Aras Innovator
- **Database Name:** The target Aras Innovator database
- **Username:** root
- **Password:** Password for “root” login (Default is “innovator”)

9. Click **Install**.

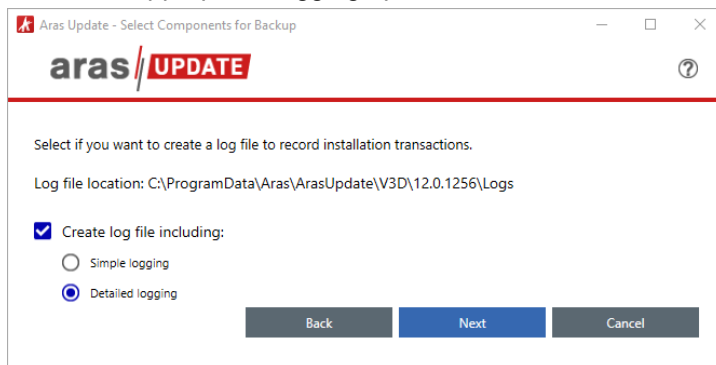
**Aras Update** will import everything required for Aras CAD Converter.

10. Launch **ArasUpdate.exe** as administrator, confirm the **Aras 3D Visualization 12.0R8** package is available in **Aras Update**, expand it, and click **Install**.

11. Select the **Aras 3D Viewers** option and click the **Next** button.



12. Select the appropriate logging option and click Next.



The logging option records the installation attempt and can be used to troubleshoot issues.

13. Input the connection information:

The screenshot shows the 'Aras Update' dialog box with the 'Aras 3D Viewers' component selected. The dialog contains the following fields and controls:

- Install Path:** A text box containing 'C:\Program Files (X86)\Aras\Innovator\Innovator' with a 'Browse...' button.
- Server URL:** A text box containing 'http://localhost/InnovatorServer'.
- Database Name:** A dropdown menu with 'InnovatorSolutions' selected.
- Username:** A text box containing 'root'.
- Password for 'root' User:** A text box with masked characters (dots).

At the bottom, there are three buttons: 'Back', 'Install', and 'Cancel'.

- **Install Path:** The path to the Aras Innovator Code Tree. It should be the same as defined in the IIS application settings.
- **Server URL:** The connection URL for Aras Innovator
- **Database Name:** The target Aras Innovator database
- **Username:** root
- **Password for 'root' User:** The password for the “root” login (Default is “innovator”)

14. Click **Install**.

**Aras Update** will import everything required for Aras 3D Viewers.

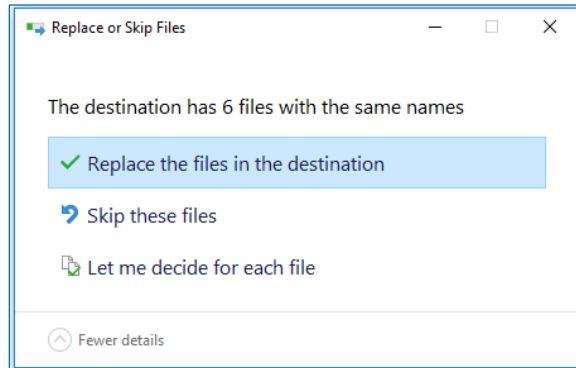
15. Disable the **Super User (root)** login after the import is complete.

**Note:** The **Super User (root)** login should not be enabled in production.

## 2.2.2 Manual Upgrade Option

1. Download the **Aras 3D Visualization 12.0R8 CD Image** package from the [Aras FTP](#) site and unzip it on the Conversion Server machine.
2. Locate the current copy of the `HOOPS Converter` folder on the local machine and back up its contents, as discussed in the *Notification and Backup* section.
3. Delete the contents of the `HOOPS Converter` folder on the local machine.
4. Copy the `\Packages\CADConverter\HOOPS Converter\` folder from the CD Image into the location on the current `HOOPS Converter` found in the second step.

- Copy the \Packages\CADConverter\ConversionServer\ folder from the CD Image to the root directory where the Conversion Server is installed, overwriting the existing ConversionServer folder and its contents.



- On the Conversion Server, navigate to the root of the Aras Conversion Server installation and open the ConversionServerConfig.xml file in a text editor.
- Confirm that the Command arguments tag includes information about sc\_compute\_bounding\_boxes as shown in the example below:

```
<ConverterSettings>
  <ArasCadConverter>
    <Application ...>
      <Command arguments="--sc_compute_bounding_boxes 'All' ... />
    ...
  </ArasCadConverter>
```

- Save and close the ConversionServerConfig.xml file.
- If the given Aras Innovator version is **12.0 SP15**, **12.0 SP16**, or **12.0 SP18** (not **12.0 SP17**), appropriate binding redirect tags should be added:
  - Open the \ConversionServer\bin\ConversionService.exe.config file from the Aras Innovator code tree in a text editor.
  - Add one of the following between the <runtime></runtime> tags:

- For Aras Innovator **12.0 SP14**:

```
<assemblyBinding xmlns="urn:schemas-microsoft-com:asm.v1">
  <dependentAssembly>
    <assemblyIdentity name="IOM" publicKeyToken="524d880b05474146"
      culture="neutral" />
    <bindingRedirect oldVersion="12.0.0.31334"
      newVersion="12.0.0.29362" />
  </dependentAssembly>
</assemblyBinding>
<assemblyBinding xmlns="urn:schemas-microsoft-com:asm.v1">
  <dependentAssembly>
    <assemblyIdentity name="Conversion.Base"
      publicKeyToken="524d880b05474146" culture="neutral" />
    <bindingRedirect oldVersion="12.0.0.31334"
      newVersion="12.0.0.29362" />
  </dependentAssembly>
</assemblyBinding>
```

```

    <dependentAssembly>
      <assemblyIdentity name="ConversionManager"
        publicKeyToken="524d880b05474146" culture="neutral" />
      <bindingRedirect oldVersion="12.0.0.31334"
        newVersion="12.0.0.29362" />
    </dependentAssembly>
  </assemblyBinding>

```

- For Aras Innovator 12.0 SP15:

```

<assemblyBinding xmlns="urn:schemas-microsoft-com:asm.v1">
  <dependentAssembly>
    <assemblyIdentity name="IOM" publicKeyToken="524d880b05474146"
      culture="neutral" />
    <bindingRedirect oldVersion="12.0.0.31334"
      newVersion="12.0.0.30028" />
  </dependentAssembly>
</assemblyBinding>
<assemblyBinding xmlns="urn:schemas-microsoft-com:asm.v1">
  <dependentAssembly>
    <assemblyIdentity name="Conversion.Base"
      publicKeyToken="524d880b05474146" culture="neutral" />
    <bindingRedirect oldVersion="12.0.0.31334"
      newVersion="12.0.0.30028" />
  </dependentAssembly>
</assemblyBinding>
<assemblyBinding xmlns="urn:schemas-microsoft-com:asm.v1">
  <dependentAssembly>
    <assemblyIdentity name="ConversionManager"
      publicKeyToken="524d880b05474146" culture="neutral" />
    <bindingRedirect oldVersion="12.0.0.31334"
      newVersion="12.0.0.30028" />
  </dependentAssembly>
</assemblyBinding>

```

- For Aras Innovator 12.0 SP16:

```

<assemblyBinding xmlns="urn:schemas-microsoft-com:asm.v1">
  <dependentAssembly>
    <assemblyIdentity name="IOM" publicKeyToken="524d880b05474146"
      culture="neutral" />
    <bindingRedirect oldVersion="12.0.0.31334"
      newVersion="12.0.0.30918" />
  </dependentAssembly>
</assemblyBinding>
<assemblyBinding xmlns="urn:schemas-microsoft-com:asm.v1">
  <dependentAssembly>
    <assemblyIdentity name="Conversion.Base"
      publicKeyToken="524d880b05474146" culture="neutral" />
    <bindingRedirect oldVersion="12.0.0.31334"
      newVersion="12.0.0.30918" />
  </dependentAssembly>
</assemblyBinding>
<assemblyBinding xmlns="urn:schemas-microsoft-com:asm.v1">
  <dependentAssembly>

```

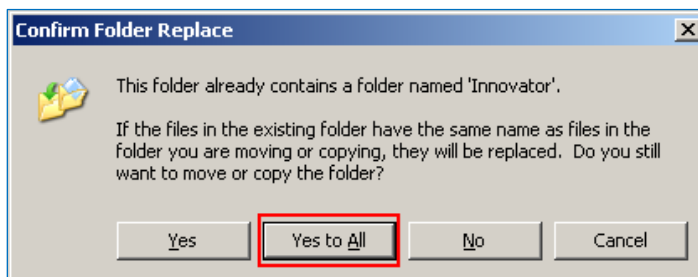
```
<assemblyIdentity name="ConversionManager"
publicKeyToken="524d880b05474146" culture="neutral" />
  <bindingRedirect oldVersion="12.0.0.31334"
newVersion="12.0.0.30918" />
</dependentAssembly>
</assemblyBinding>
```

- For Aras Innovator 12.0 SP18:

```
<assemblyBinding xmlns="urn:schemas-microsoft-com:asm.v1">
  <dependentAssembly>
    <assemblyIdentity name="IOM" publicKeyToken="524d880b05474146"
culture="neutral" />
    <bindingRedirect oldVersion="12.0.0.31334"
newVersion="12.0.0.31975" />
  </dependentAssembly>
</assemblyBinding>
<assemblyBinding xmlns="urn:schemas-microsoft-com:asm.v1">
  <dependentAssembly>
    <assemblyIdentity name="Conversion.Base"
publicKeyToken="524d880b05474146" culture="neutral" />
    <bindingRedirect oldVersion="12.0.0.31334"
newVersion="12.0.0.31975" />
  </dependentAssembly>
</assemblyBinding>
<assemblyBinding xmlns="urn:schemas-microsoft-com:asm.v1">
  <dependentAssembly>
    <assemblyIdentity name="ConversionManager"
publicKeyToken="524d880b05474146" culture="neutral" />
    <bindingRedirect oldVersion="12.0.0.31334"
newVersion="12.0.0.31975" />
  </dependentAssembly>
</assemblyBinding>
```

10. Save and close the `ConversionService.exe.config` file.
11. Restart the **World Wide Web Service (IIS)**.
12. Download the **Aras 3D Visualization 12.0R8 CD Image** package from the [Aras FTP](#) site and unzip it on an Aras Innovator server machine.
13. Copy the `\Packages\3DViewers\Innovator\` folder to the root of the Aras innovator code tree, overwriting the existing `Innovator` folder and all its contents.

It is recommended that a server administrator perform this step.



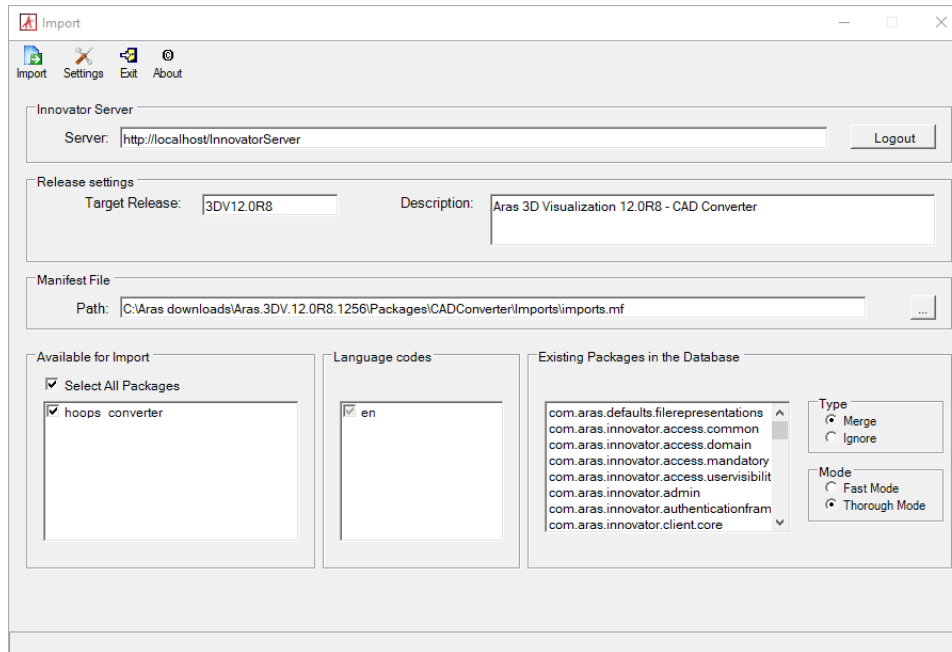
14. From the root of the Code Tree, open `\Innovator\Client\web.config` for editing.
15. Change the value of the `filesRevision` attribute from `std` to `2`, `3`, or `4`:

```
</runtime>
```

```
<キャッシングModule moduleEnabled="true" filesRevision="2" />
```

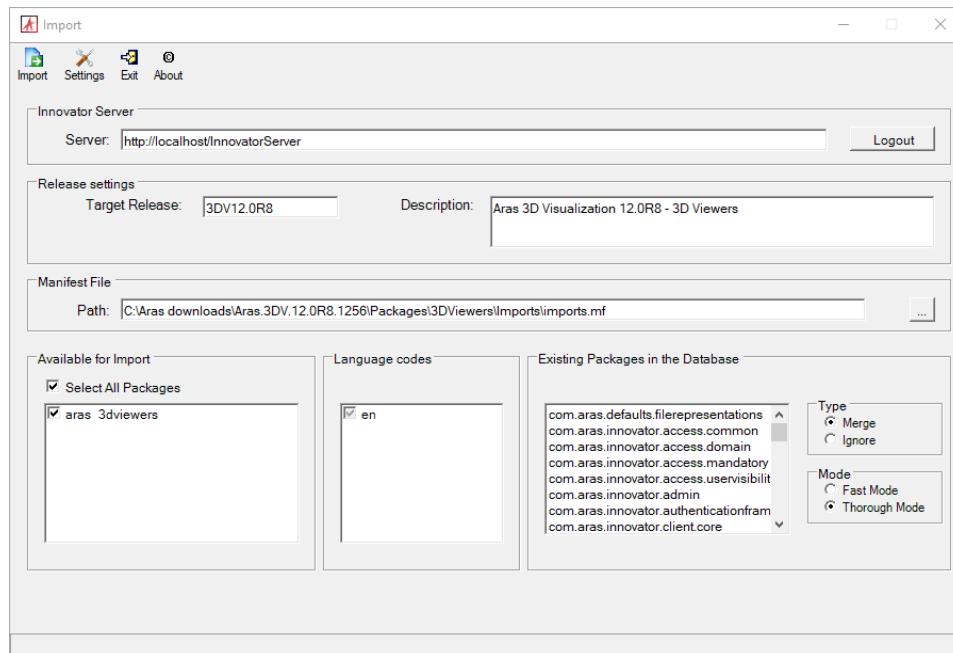
</configuration>

16. Save the changes to the `web.config` file and close it.
17. Use the **Package Import Export Utilities** to import the Aras 3D Visualization 12.0R8 database package. For more information about using this tool, please refer to the *Aras Innovator 12.0 SP[14-18] – Package Import Export Utilities* documentation.
  - a. Enable the **Super User (root)** login to perform this step.
  - b. Browse to the `\PackageImportExportUtilities\Import\` folder in the Aras Innovator CD Image and run the **Import.exe** file as administrator.



- c. Input the connection information to update the CAD Converter:
  - **Innovator Server:** The connection URL for Aras Innovator  
 Click the **Login** button and enter the following:
    - **Username:** root
    - **Password:** Password for “root” login (Default is “innovator”)
  - **Target Release:** 3DV12.0R8
  - **Description:** Aras 3D Visualization 12.0R8 - CAD Converter
  - **Manifest File Path:** The manifest file  
`\Packages\CADConverter\Imports\imports.mf`
  - **Available for Import:** Select All Packages
  - **Type:** Merge
  - **Mode:** Thorough Mode
- d. Click the **Import** button.

18. Input the connection information to update the 3D Viewers:



a. Input the connection information to update the 3D Viewers:

- **Innovator Server:** The connection URL for Aras Innovator  
Click the **Login** button and enter the following:
  - **Username:** root
  - **Password:** Password for “root” login (Default is “innovator”)
- **Target Release:** 3DV12.0R8
- **Description:** Aras 3D Visualization 12.0R8 – 3D Viewers
- **Manifest File Path:** The manifest file  
`\Packages\3DViewers\Imports\imports.mf`
- **Available for Import:** Select All Packages
- **Type:** Merge
- **Mode:** Thorough Mode

b. Click the **Import** button.

19. Disable the **Super User (root)** login after the import is completed.

**Note:** The **Super User (root)** User should not be enabled in production.

## 2.3 Confirming the Upgrade

Use the following procedure to check if the database has been updated correctly:

1. Log into Aras Innovator as an administrator.
2. From the **TOC**, expand **Administration** and select **Variables**.
3. Confirm the following variables:

Name	Value
3D Visualization.CadConverter	12.0R8
3D Visualization.3DViewers	12.0R8

If the installation fails at any time, revert to backups and contact Aras Support at [support@aras.com](mailto:support@aras.com).

## 3 (Optional) Upgrading Aras Dynamic Visualization

Upgrading the Aras Dynamic Visualization component should only be done if it has been previously installed with Aras Innovator. If Aras Dynamic Visualization has not been installed, it can be installed for the first time by following the instructions in the *Aras 3D Visualization 12.0R8 – Installation Guide*.

### 3.1 Installing the Upgrade

The Aras Dynamic Visualization can be installed using the Automated Installation Option (using the **Aras Update Tool**) or the Manual Installation Option (using the **Aras Import Tool**).

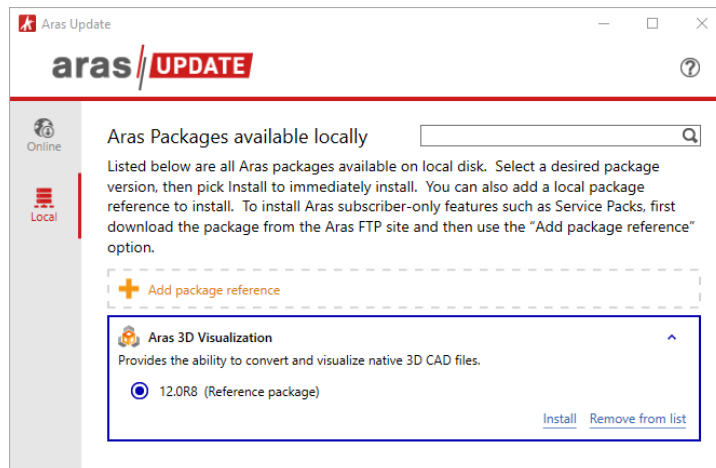
#### 3.1.1 Automated Upgrade Option

1. Download the **Aras 3D Visualization 12.0R8 CD Image** package from the [Aras FTP](#) site and unzip it to the Innovator Server machine.
2. Enable the **Super User (root)** login.
3. Launch the **ArasUpdate.exe** file as the administrator.

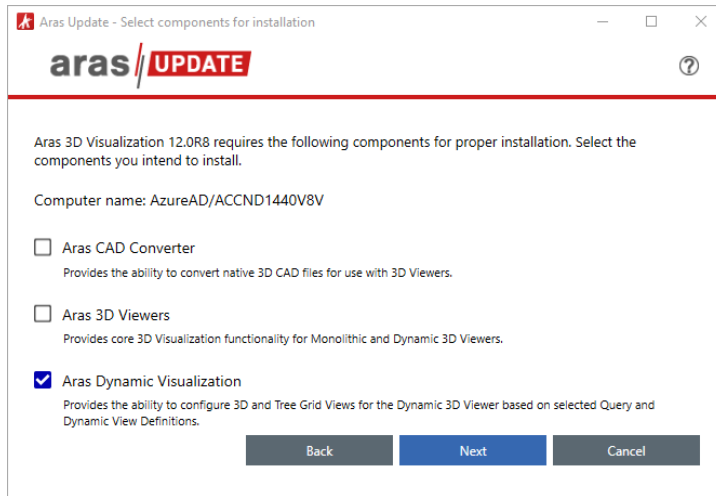
If default options were selected during installation, the **ArasUpdate.exe** file can be found in the `C:\Program Files (x86)\Aras\Aras Update\` directory

**Note:** For more information on **Aras Update**, see the *Aras Update – User Guide*.

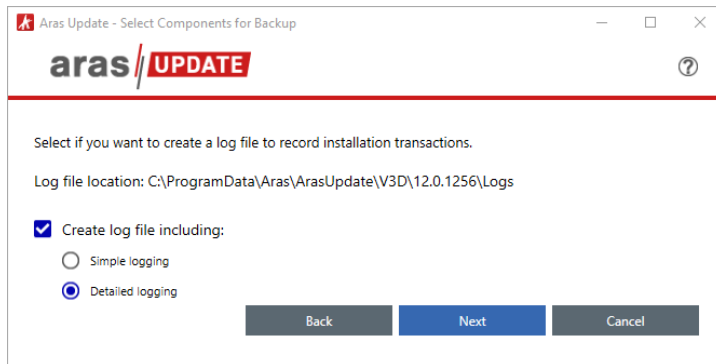
4. On the **Local** tab, click **Add package reference** and navigate to the folder where the **Aras 3D Visualization 12.0R8 CD Image** package was extracted from the first step.
5. Expand the **Aras 3D Visualization** package and click **Install**.



6. Select the **Aras Dynamic Visualization** option and click the **Next** button.



7. Select the appropriate logging option and click **Next**.



The logging option records the installation attempt and can be used to troubleshoot issues.

8. Input the connection information:

Aras Update

aras UPDATE

Enter the following parameters for each component you are going to install and then click Install button to continue.

✓ Aras Dynamic Visualization

Install Path (example - ..\Innovator application directory)  
C:\Program Files (x86)\Aras\Innovator\Innovator

Server URL (example - 'http://localhost/InnovatorServer')  
http://localhost/InnovatorServer

Database Name (example - 'InnovatorSolutions')  
InnovatorSolutions

Username (should use 'root' User)  
root

Password for 'root' User  
.....

- **Install Path:** The path to the Aras Innovator Code Tree. It should be the same as defined in the IIS application settings.
- **Server URL:** The connection URL for Aras Innovator
- **Database Name:** The target Aras Innovator database
- **Username:** root
- **Password for 'root' User:** The password for the “root” login (Default is “innovator”)

9. Click **Install**.

**Aras Update** will import everything required for Aras Dynamic Visualization.

10. Disable the **Super User (root)** login after the import is complete.

**Note:** The **Super User (root)** login should not be enabled in production.



### 3.1.2 Manual Installation Option

1. Download the **Aras 3D Visualization 12.0R8 CD Image** package from the [Aras FTP](#) site and unzip it on the server machine.
2. In the downloaded CD image package, navigate to the `Aras 3D Visualization 12.0R8 CD Image\Packages\DPN\` folder.

3. Navigate to a folder that matches the target Aras Innovator version:

Windows (C:) > Aras downloads > Aras.3DV.12.0R8.1256 > Packages > DPN

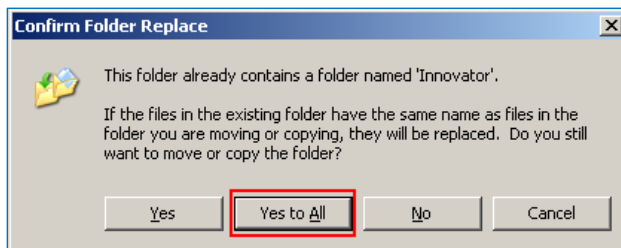
Name

-  SP14-16
-  SP17-18

- **SP14-16:** Aras Innovator 12.0 SP14, 12.0 SP15, or 12.0 SP16
- **SP17-18:** Aras Innovator 12.0 SP17 or 12.0 SP18

**Note:** The database and Code Tree updates should come from the folder specific to a given Aras Innovator instance.

4. Copy the `Innovator` folder from the matching CD Image folder to the root of the Aras Innovator code tree, overwriting the existing `Innovator` folder and all its contents.  
It is recommended that a server administrator perform this step.



5. If the target Aras Innovator version is **12.0 SP15**, **12.0 SP16**, or **12.0 SP18** (not **12.0 SP17**), appropriate binding redirect tags should be added:
  - a. Open the `\Innovator\Server\web.config` file from the Aras Innovator code tree in a text editor.
  - b. In the **web.config** file, add the following between the `<runtime></runtime>` tags:

- For Aras Innovator **12.0 SP15**:

```
<assemblyBinding xmlns="urn:schemas-microsoft-com:asm.v1">
  <dependentAssembly>
    <assemblyIdentity name="IOM"
      publicKeyToken="524d880b05474146" culture="neutral" />
    <bindingRedirect oldVersion="0.0.0.0-12.0.0.29362"
      newVersion="12.0.0.30028" />
  </dependentAssembly>
</assemblyBinding>
<assemblyBinding xmlns="urn:schemas-microsoft-com:asm.v1">
  <dependentAssembly>
    <assemblyIdentity name="Aras.Server.Core"
      publicKeyToken="524d880b05474146" culture="neutral" />
    <bindingRedirect oldVersion="0.0.0.0-12.0.0.29362"
      newVersion="12.0.0.30028" />
  </dependentAssembly>
</assemblyBinding>
```

- For Aras Innovator **12.0 SP16**:

```
<assemblyBinding xmlns="urn:schemas-microsoft-com:asm.v1">
  <dependentAssembly>
```

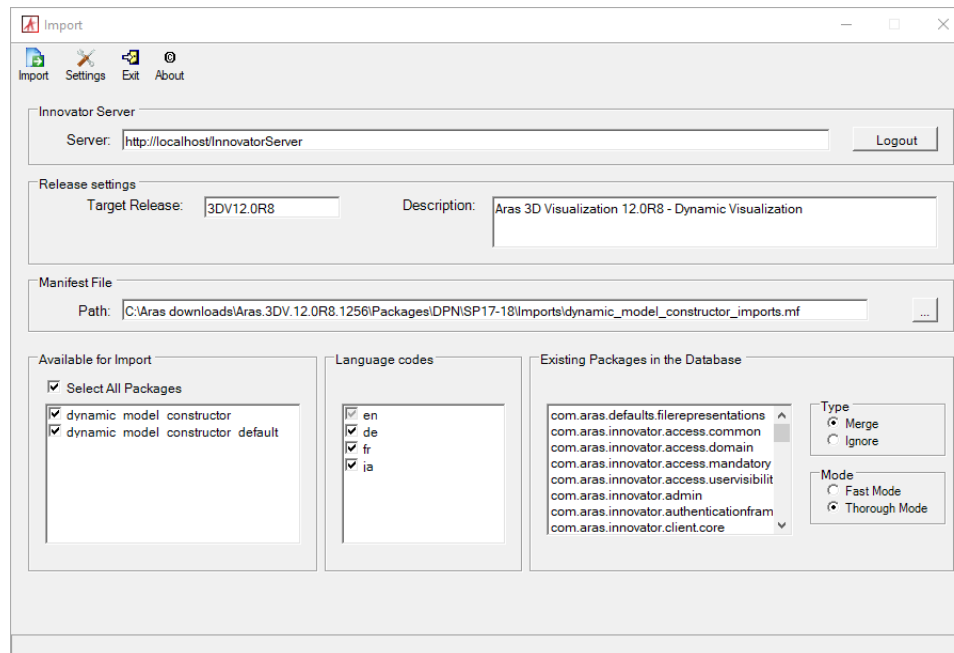
```
<assemblyIdentity name="IOM"
publicKeyToken="524d880b05474146" culture="neutral" />
  <bindingRedirect oldVersion="0.0.0.0-12.0.0.29362"
newVersion="12.0.0.30918" />
</dependentAssembly>
</assemblyBinding>
<assemblyBinding xmlns="urn:schemas-microsoft-com:asm.v1">
  <dependentAssembly>
    <assemblyIdentity name="Aras.Server.Core"
publicKeyToken="524d880b05474146" culture="neutral" />
    <bindingRedirect oldVersion="0.0.0.0-12.0.0.29362"
newVersion="12.0.0.30918" />
  </dependentAssembly>
</assemblyBinding>
```

- For Aras Innovator **12.0 SP18**:

```
<assemblyBinding xmlns="urn:schemas-microsoft-com:asm.v1">
  <dependentAssembly>
    <assemblyIdentity name="IOM"
publicKeyToken="524d880b05474146" culture="neutral" />
    <bindingRedirect oldVersion="0.0.0.0-12.0.0.31334"
newVersion="12.0.0.31975" />
  </dependentAssembly>
</assemblyBinding>
<assemblyBinding xmlns="urn:schemas-microsoft-com:asm.v1">
  <dependentAssembly>
    <assemblyIdentity name="Aras.Server.Core"
publicKeyToken="524d880b05474146" culture="neutral" />
    <bindingRedirect oldVersion="0.0.0.0-12.0.0.31334"
newVersion="12.0.0.31975" />
  </dependentAssembly>
</assemblyBinding>
```

- c. Save the changes to the `web.config` file and close it.
6. Restart the **World Wide Web Service (IIS)**.

7. Use the **Package Import Export Utilities** to import the Aras 3D Visualization 12.0R8 database package. For more information about using this tool, please refer to the *Aras Innovator 12.0 SP[14-18] – Package Import Export Utilities* documentation.
  - a. Enable the **Super User (root)** login to perform this step.
  - b. Browse to the `\PackageImportExportUtilities\Import\` folder and run the **Import.exe** file as administrator.



- c. Enter the following information:
  - **Innovator Server:** The connection URL for Aras Innovator  
 Click the **Login** button and enter the following:
    - **Username:** root
    - **Password:** Password for “root” login (Default is “innovator”)
  - **Target Release:** 3DV12.0R8
  - **Description:** Aras 3D Visualization 12.0R8 – Dynamic Visualization
  - **Manifest File Path:** The manifest file  
`\Packages\DPN\SPxx\Imports\imports.mf`
  - **Available for Import:** Select All Packages
  - **Type:** Merge
  - **Mode:** Thorough Mode
- d. Click the **Import** button.
- e. Disable the **Super User (root)** login after the import is completed.

**Note:** The **Super User (root)** login should not be enabled in production.

## 3.2 Confirming the Upgrade

Use the following procedure to check if the database has been updated correctly:

1. Log into Aras Innovator as an administrator.
2. From the **TOC**, expand **Administration** and select **Variables**.
3. Confirm the following variable:

<b>3D Visualization.DPN</b>
12.0R8

If the installation fails at any time, revert to backups and contact Aras Support at [support@aras.com](mailto:support@aras.com).